

# OUR FAVORITE APPS

By Kristen Ammerman

Everyone likes a good app to make his or her job easier. Members of the *Interface* Editorial Board Committee submitted a few of their favorites, highlighted here. Send your favorite app to Kristen Ammerman, [kammerman@rci-online.org](mailto:kammerman@rci-online.org). If we like it, we'll publish it in a future issue. See further directions in the "BEACon" box on page 33.

## Bing Maps

By Microsoft

Provides angular aerial view (as opposed to straight-down satellite view) of buildings to see elevations and differences between roof levels.

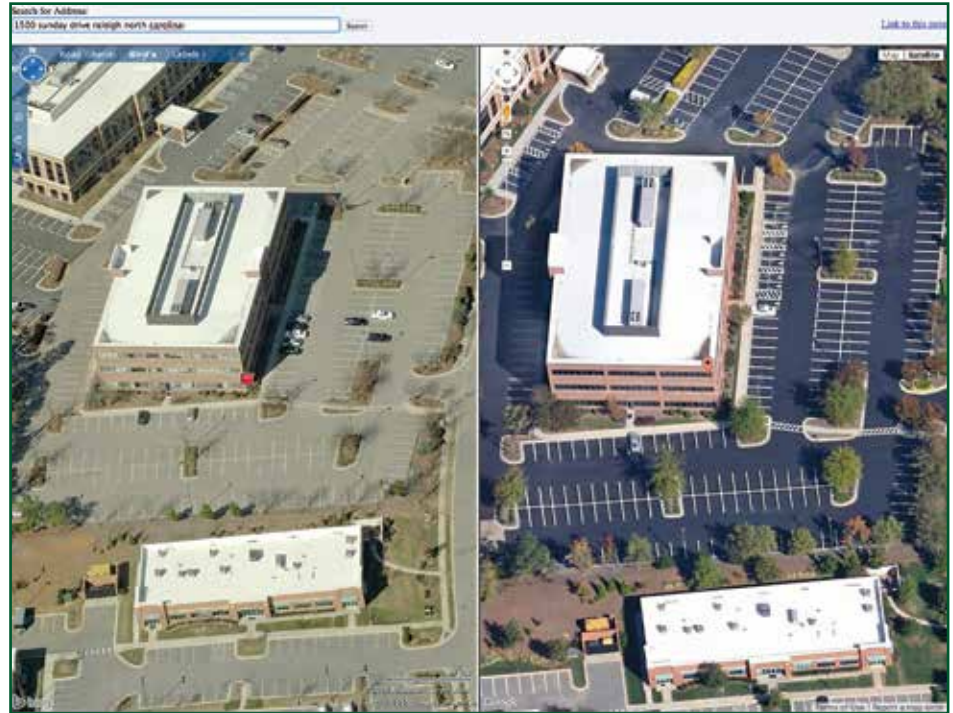
**\$:** Free

**Sys.:** Available for Windows Phone 8, iOS, Android

## Google Earth

By Google

- Compute distances and areas using measurement tools.
- Print high-resolution images for presentations and reports.
- Import large vector image files to quickly map geographic information system (GIS) data.
- Map addresses with the Spreadsheet Importer



Screen capture from *Jonasson.org* compares Bing (left) and Google (right).

**\$:** Free mobile version; \$300 for desktop version.

**Sys.:** Available for Android and iOS mobile devices.



## Bluebeam Revu

By Bluebeam Software, Inc.

Combines PDF editing, markup, and collaboration technology with file creation. Batch conversion of unlimited MS Office files to PDF and export as editable documents. Access and navigate PDFs and markup with industry-standard symbols in the field, verifying measurements on the fly. Collaborate with colleagues in real time using cloud-based storage.

**\$:** Download for \$9.99

**Sys.:** Requires iOS 8.0 or later. Compatible with iPad.

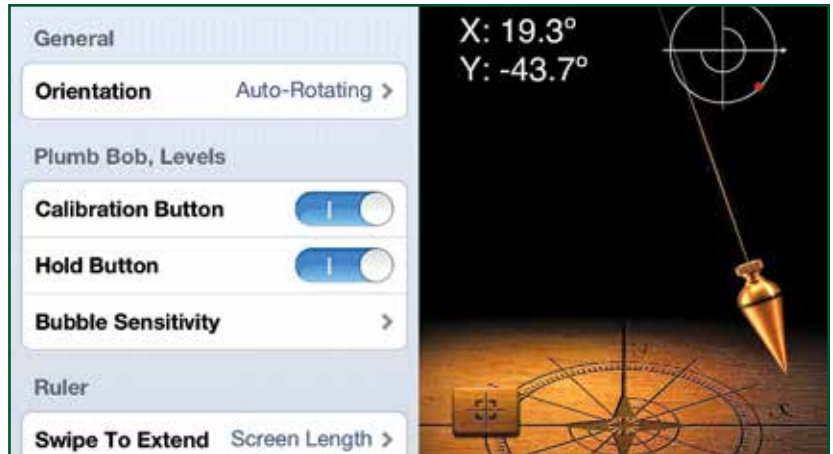
# iHandy Carpenter

By iHandy Inc.

This handy app has five tools:

- A plumb bob to verify the verticality of lines or walls
- A surface level to level any flat surface
- A bubble level bar
- A steel protractor, measuring angles from 0 to 180 degrees
- A steel ruler, supporting both inches and centimeters

Once calibrated, the plumb bob, surface level, and level bar can also be used as an inclinometer/clinometer by reading the angles on the screen.



**\$:** Download for \$1.99      **Sys.:** Requires iOS 4.3 or later. Compatible with iPhone, iPad, and iPod touch.

# Pitch Gauge

By Pitch Gauge LLC

Use Pitch Gauge to calculate the total size and slope of any roof. It includes two digital slope finders and a square calculator. Find Slope without ever leaving the ground using camera mode. Then, take a picture with the pitch reading and current address stamped onto it, and attach it to an email for your own or the client's documentation.



**\$:** Free Download  
Unlock Snap Pitch: \$0.99  
Remove ads: \$1.99

**Sys.:** Available for Apple, iPad, and Android

## BEACon

### Building Envelope Apps for Consultants

Send your favorite building envelope app to *Interface*. If we like it, we'll use it in our BEACon feature in a future issue of *Interface*.

E-mail the name of the app and a high-resolution screen capture image to:  
*Subject:* **BEACon**  
**kammerman@rci-online.org**